

# Product Bulletin



Trimble Utilities  
November 20, 2023

## RELEASE ANNOUNCEMENT

### Trimble Unity® v5.8

Trimble is pleased to announce version 5.8 of Trimble Unity® Remote Monitoring (RM) and Work Management (WM) software. Below is a list of key benefits, additional release details, and fixed issues.

#### Trimble Unity RM 5.8 Release Benefits

- **Use alert calculations to get notified of abnormal conditions**  
Alert measurements are customized metrics within Unity RM that initiate alarms and notifications. These metrics are designed to pinpoint conditions or events requiring immediate attention, assisting users in ensuring the secure and dependable operation of their system assets.
- **Streamline reporting with associating measurements**  
Set up associations to streamline data sharing between different monitoring sites, allowing linked measurements to be incorporated into a site's standard telemetry report.
- **Filter alarm status to alleviate user concerns**  
Unity RM permission policies have been extended to filter a monitoring site's alarm status and history based on a user's assigned permissions. This approach ensures a clear and user-specific presentation of relevant information, enhancing user experience.
- **Eliminate clutter by deleting your retired RTUs**  
Declutter the available RTU list by removing any decommissioned units. Historical data is not impacted.
- **See a snapshot of current conditions with the last value measurement property**  
Enhance operational insights by instantly viewing the most recent data value for each measurement directly on its property card, eliminating the need to open a separate report.
- **Interpret event states more easily**  
Unity RM enhances the clarity and interpretability of telemetry reports containing event data by utilizing 'ON' and 'OFF' labels instead of numeric values (0 for closed and 1 for open).

## Trimble Unity WM 5.8 Release Benefits

- **Session timeout**  
Enhances security and control through customized application timeout settings on both web and mobile apps.
- **Form card improvement**  
For customers that have custom classifications, we introduced the ability to prepend any card configuration value with either fixed text or an alias from an attribute definition in the classification. This functionality can clarify the meaning of certain values.
- **Bug fixes** improve stability and performance.

If you are a Trimble Unity RM or WM cloud-hosted customer, your software has been updated to the latest version.

If you have a dedicated hosted environment, our support team will reach out to coordinate your cloud software update.

***Please join our Trimble Unity 5.8 webinar on December 14, 2023 at 2 pm EST to learn about the latest release and get answers to your questions. Sign up [here](#).***

# RELEASE DETAILS

## Trimble Unity Remote Monitoring (RM)

### Calculated Alert Measurements and Types

Alert measurements expand on our calculation capabilities, enabling users to merge RTU and imported data for notifying team members about intricate conditions that go beyond the capabilities of RTU alarms on their own. For instance, you can identify a rising level without concurrent precipitation or pressure drops affecting multiple monitoring sites. To further enhance this system, incorporate dwell counts to curtail false alarms and reduce redundant notifications. Define new types to classify your alerts, which are reported and grouped on the system health dashboard.

#### Associate "Rain" to Sites

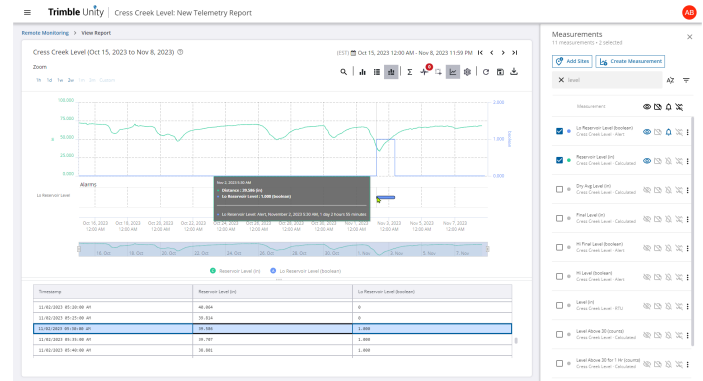
Site Name	Site Type	Status	Site Group
<input checked="" type="checkbox"/> M551 - Forest Rd	Wastewater Flow	In Service	..Demo Sites
<input checked="" type="checkbox"/> M552 - Rural St	Wastewater Flow	In Service	..Demo Sites
<input checked="" type="checkbox"/> M553 - New York St	Wastewater Flow	In Service	..Demo Sites
<input checked="" type="checkbox"/> M554 - Indian Trail Rd	Wastewater Flow	In Service	..Demo Sites
<input checked="" type="checkbox"/> M555 - McCoy Dr	Wastewater Flow	In Service	..Demo Sites
<input type="checkbox"/> NW01 - W Ogden Ave	Wastewater Flow	In Service	..Demo Sites

### Alarm Filtering

Optimize response procedures by employing permission policies and hiding specific alarm and alert types from users who do not require access, facilitating a more organized approach to handling alarms. Previously, RM users could define permission policies that controlled monitoring site and measurement visibility for various user groups. Permission policies have been extended to filter the monitoring site's alarm status and history, ensuring users have a consistent view of their remote monitoring system.

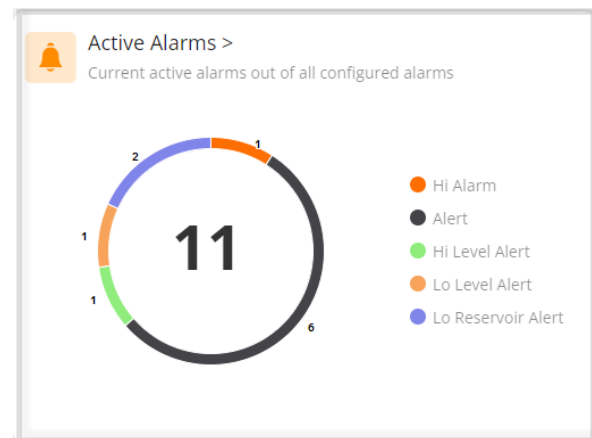
### Additional Trimble Unity RM 5.8 improvements

- **RTU Deletion:** As RTUs are upgraded or replaced over time, the old ones may become obsolete. RM 5.8 lets users delete these outdated RTUs without losing historical data.
- **Last Value:** To enhance operational insights at monitoring sites, we instantly display the most recent recorded average value alongside other critical measurement properties.
- **Event ON/OFF Reporting:** Remove ambiguity by converting event data from numeric values (0 for closed and 1 for open) to more descriptive ON and OFF labels. The label displayed partially depends on the value selected in the RTU configuration for "Active Status Indicated By."



### Associated Measurements

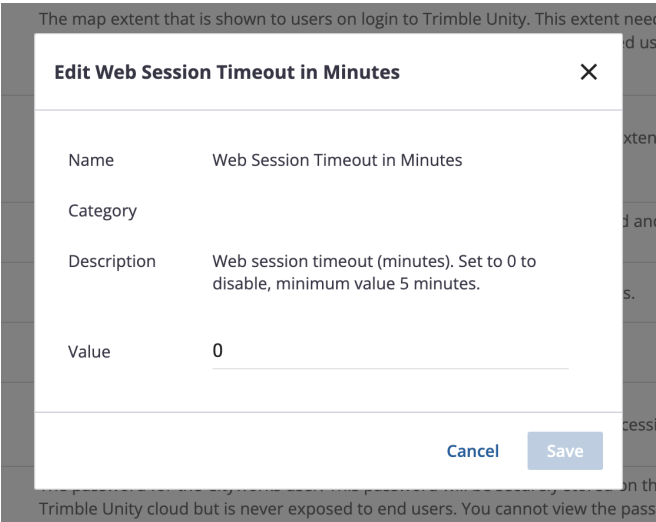
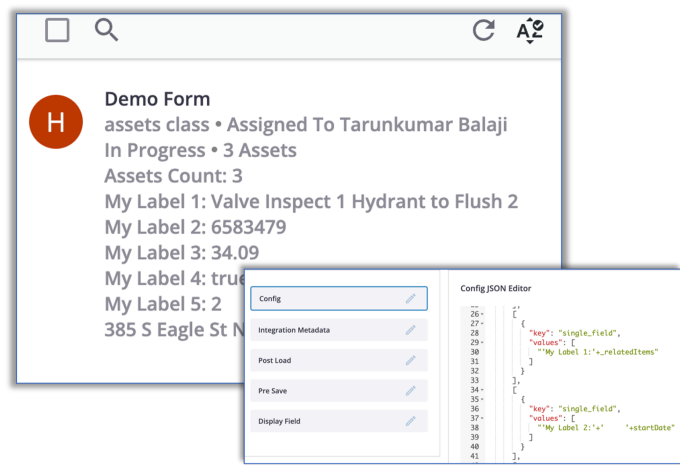
Set up associations to simplify data sharing between monitoring sites, incorporating these measurements into a site's default telemetry report. For example, you can share a single rain measurement with multiple flow monitoring sites in the same geographic area. Associations streamline the process of building reports that contain related data from various monitoring sites.



# Trimble Unity Work Management (WM)

## Session Timeout

Enhanced security and control are achieved through customized application timeout settings. When left idle for a duration exceeding the defined timeout period, the application will automatically log out, ensuring data stays secure. The timeout setting is configurable for both web and mobile clients.



## Form Card Improvement

For customers that have custom classifications, they can now prepend any card configuration value with either fixed text or an alias from an attribute definition in the classification. This improvement allows prepending any given card configuration value with a static text or with the alias of an attribute definition on the classification. This would make the meaning of certain values clear. This enhancement provides context and clarity to specific values in the card configuration.

# FIXED ISSUES

Below is the list of issues fixed in this release.

## Trimble Unity Remote Monitoring

- URM-3249: The 3330 RTU channels 15-30 should be classified as EVENT rather than DIGITAL.
- URM-3294: Turning off a sensor channel with no statistics enabled should clear the validation error.
- URM-3719: Getting 400 Error when installing UT-35 (Massa) to a sensor index and attempting to update the RTU.
- URM-3727: Last call field progress messages are not updated and displayed in Unity when the RTU is in a different time zone from the client and server.
- URM-3758: Annotation Edit/Delete button is not showing for RM - Telemetry Annotation role assigned user.
- URM-3765: Formula lengths should be limited to 1000 characters.
- URM-3813: ULS measurement signal strength that uses type Ultrasonic Signal Strength is not visible in Unity RM even with Diagnostics turned on.
- URM-3818: RM ArcGIS Connector symbols do not render correctly in the legend on ArcGIS 11.1.
- URM-3895: New RU-35 initialized with invalid ChnlRange properties for channels 1 and 2.
- URM-3907: The Telog NOAA/METAR data import is not working due to changes in the request format.
- URM-3915: Search filter contents reset of editing Site Type or Measurement Type.
- URM-3932: Fix the PR32A channel type and range to use the supported sensor in the default template (i.e. 3251).
- URM-3939: For PR32A, Unity allows the channel type to change from PT-DS (71) to Pressure (21).

## Trimble Unity Work Management

- UWM-4034: ArcGIS Connector: Improve support for outputting classification collected data in CSV and JSON formats
- UWM-5373: Fixed sync error that occurred when a field user has collected hundreds of attachments across hundreds of forms without syncing regularly.
- UWM-5396: On the web application, when editing a List field, the edit button is on the far right.
- UWM-5411: Editing a work order may delete values where the values were configured as hidden in the backend by the Trimble PS team.

## Trimble Unity Mobile

- UM-3405: Addressed scripting issue where ID fields were not being made available for domain items.
- UM-5215: Memory issue leading to possible map crash.
- UM-5454: Issue with online basemap disappearing.
- UM-5459: App freezes when trying to capture geometry from the map view.
- UM-5544: Issue with large complex polygons being drawn in mobile (Android).
- UM-5579: Issue with attachments made in Cityworks not being visible in mobile.
- UM-5670: Fields in WO tasks not getting saved.