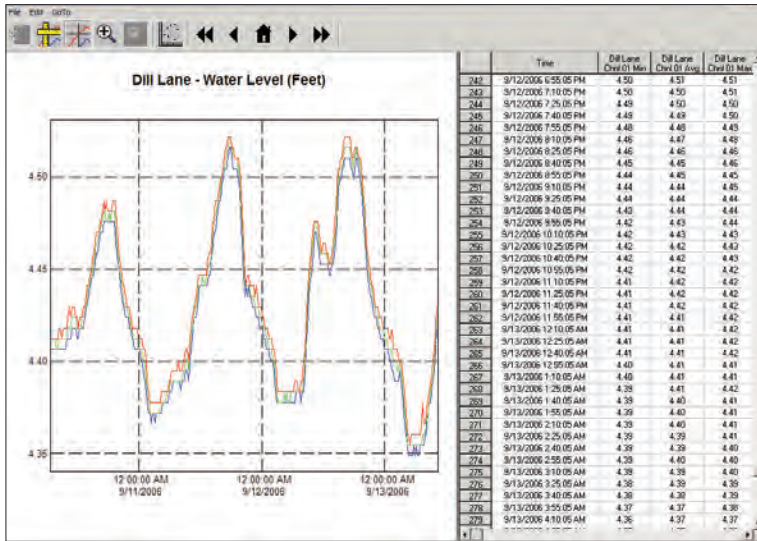


Water Level Monitoring with Telog's WLS-31, Level Tracker



Unattended In-well Applications

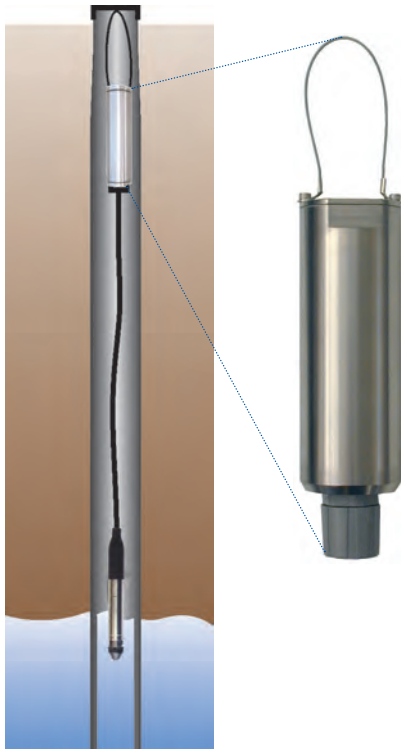
Installs in 2" Wells

Automatic Barometric Pressure Correction

7 Year Battery Life

Windows Software Support

Rugged PDA Data Transfer Support



Telog's Level Tracker is a simple, effective and economical system designed to measure water level using a datalogger and pressure sensor. The Level Tracker is valuable in level monitoring applications such as aquifer characterization, environmental remediation, well or tank level recording, combined sewer overflow and sanitary sewer overflow.

With a Level Tracker, everything you need for level monitoring—recorder, sensor and cable comes in one simple and rugged package, pre-assembled and calibrated. The simplicity of the compact battery-powered Level Tracker enables you to put it to work, unattended, inside a 2" well within minutes of unpacking.

The Level Tracker performs uninterrupted at a site, even as you collect data from its wrap-around memory. This paperless system records and stores data in its memory for later transfer to a computer for data review and reporting. Recorded data may be gathered from the WLS-31 in the field by a portable PC operating Telogers for

Windows software, or Telog's handheld data transfer unit (DTU-R). The DTU is especially convenient for gathering data from several Level Trackers. At times when on-site data evaluation is required, a laptop and Telogers for Windows software, is all you need.

For more information call us at **585.742.3000**, email **TelogSales@telog.com**, or visit us at **www.telog.com**.



WLS-31 Level Tracker Specifications



Recorder

Model	Tellog PR-31
Type	Single channel pressure recorder
Measurement	
Resolution	12 bits (0.025%)
Accuracy	+/- 0.075% of full scale at 70°F +/- 50 ppm/°F
Temperature range	-40°F to +150°F
Recording	
Sample rate	Programmable from 4/sec up to 8 hours
Data interval	Programmable from 1/sec up to 8 hours
Values saved	Selectable min, avg & max per interval
Memory	128 Kbytes (~80,000 data values)
Interface	
Type	RS-232; 300 to 19.2 Kbaud
Connector	Circular 4 pin watertight
Battery	
Type	Single AA Lithium (Saft LS 14500 or equal)
Life	7 years typical
Physical	
Temperature range	-40°F to +150°F
Environmental	Submersible to NEMA 6 (IP-67)
Enclosure	316 stainless steel
Pressure vent	0.2 micron Gore-Tex filter
Size	5.5"L x 1.75"D
Weight	2.2 lbs
Support Software	
S-3PC	Telloggers for Windows
S-3PCL	Telloggers for Windows Lite
Data Transfer Unit	DTU-R Rugged PDA running Palm OS including Tellog DTU software

Sensor

Model	Tellog PT-30b
Type	Strain gauge pressure sensor
Range	10 PSI standard (0 to 22 feet of level) (contact Tellog for alternate pressure ranges)
Accuracy	
Non-linearity	+/- 0.25% of span; BFSL
Repeatability	+/- 0.03% of span; BFSL
Hysteresis	+/- 0.03% of span; BFSL
Temperature Range	-4°F to 140°F
Temperature Effect	0.01%/°F
Pressure Over Range	
Proof pressure	4x full scale for 5 PSI range 2x for higher ranges
Burst pressure	10x full scale for 5 PSI range 4x for higher ranges
Physical	
Pressure connection	G 1/4 female
Sensor length	5.4"
Sensor diameter (max)	0.69"
Sensor body material	316 stainless steel
Cable	Vented polyurethane 0.315" diameter
Cable length	25 feet (contact Tellog for alternate cable lengths)
Cable weight	0.027 lbs./ft

Ordering Information

To order the SSO-31 system, specify the model number as follows:
SSO-31-P-L
Where P=pressure range in PSI and L=cable length in feet
Example: SSO-31-10-20



Tellog Instruments, Inc.

830 Canning Parkway, Victor, NY 14564-8940, USA
Phone: 585.742.3000 • Fax: 585.742.3006
E-mail: TellogSales@telog.com • www.telog.com

Specifications within this brochure are subject to change without notification.

Tellog® is a registered trademark and Teloggers™ is a trademark of Tellog Instruments, Inc.
Windows® is a registered trademark of Microsoft Corporation.
Palm® is a registered trademark of Palm, Inc.